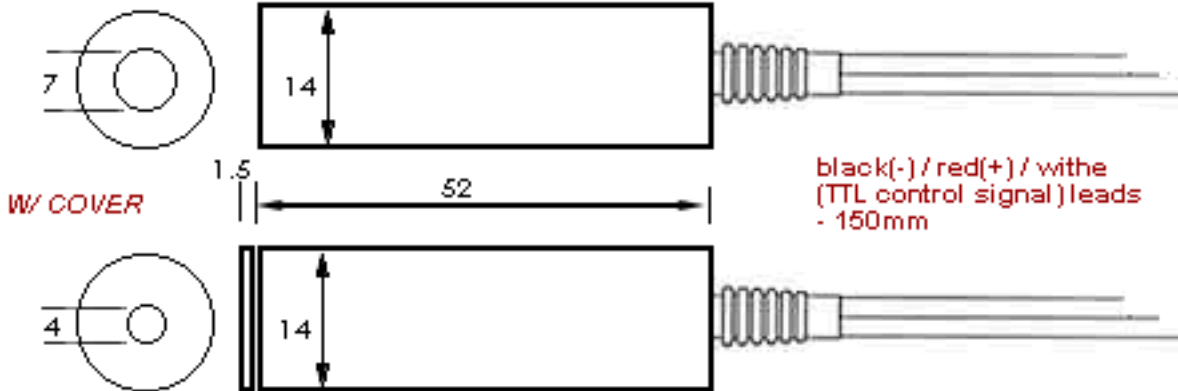


M4LA series - External TTL Modulation Available (APC)

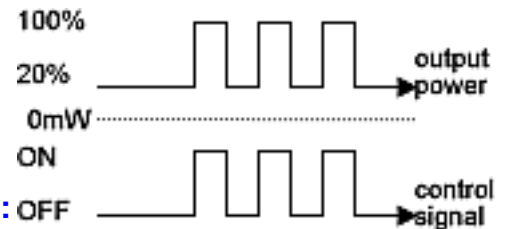
W/O COVER

unit-mm



Characters

- Auto optical output power control
- Low operating power consumption
- Polarity reverse protected
- Various models available
- Connection optional : leads wire or spring
- Focus distance assigned by customer
- Glass II is optional
- saving cost diode (T3 type) is available



note :

Specifications

Modulation Frequency	CW to 10 KHz						
Modulation Level	100%(signal on) & 20%(off) of optic output power (see note)						
Max. Optical Output power	~70% of max. diode power (w/o front cover, 7mm aperture) ~50% of max. diode power (w/front cover, 4mm aperture)						
Wavelength (nm)	635	650	670	780	808	830	
Diode Power (mW) (* =T3 is available)	5*/7/10*/15(T3 only)/20	5*/10*/15(T3 only)/20/30/50	7/10	5/20/70	500/1000	40/100/150	
Operation Voltage	5V/12V						
Operation Temperature	-10 ~+40/50/60/70°C						
Beam Diameter	7mm (w/o front cover), 4mm (w/ front cover)						
Spot Size	see the photo- 7mm / 4mm aperture						
Beam Divergence	<0.8mrd						
Bore Sighting	<15mrd						
Operating Current at 25°C	<50mA						
Collimating lens	3-element glass lens						
Case Material	Black Anodized (Aluminum)						
MTTF (Mean Time To Failure)	10000 hrs (for standard type) 3000 hrs (for T3 type)						